

LITEC Construction system

DAR

Skylight
Wedge frame for
Roof window
Flat-roof window

LITEC DAR Skylight wedge frames for more light from above

The wedge of a skylight serves to illuminate and ventilate rooms under flat or flat sloping roofs. LITEC DAR fulfils high energy efficiency requirements when it comes to new buildings and refurbishment.



LITEC DAR

Skylight wedge frame based on the advantages of proven PUR/PIR-sandwich elements
Assembly with no thermal bridges

Lean format

Plywood panels only
2 x 15 mm
Good insulating effect with a low insulation thickness

**Ensured material properties
PUR/PIR rigid foam**

Environmentally friendly
Rot-proof
Mould-proof
Quality which has already proven itself in other construction areas.

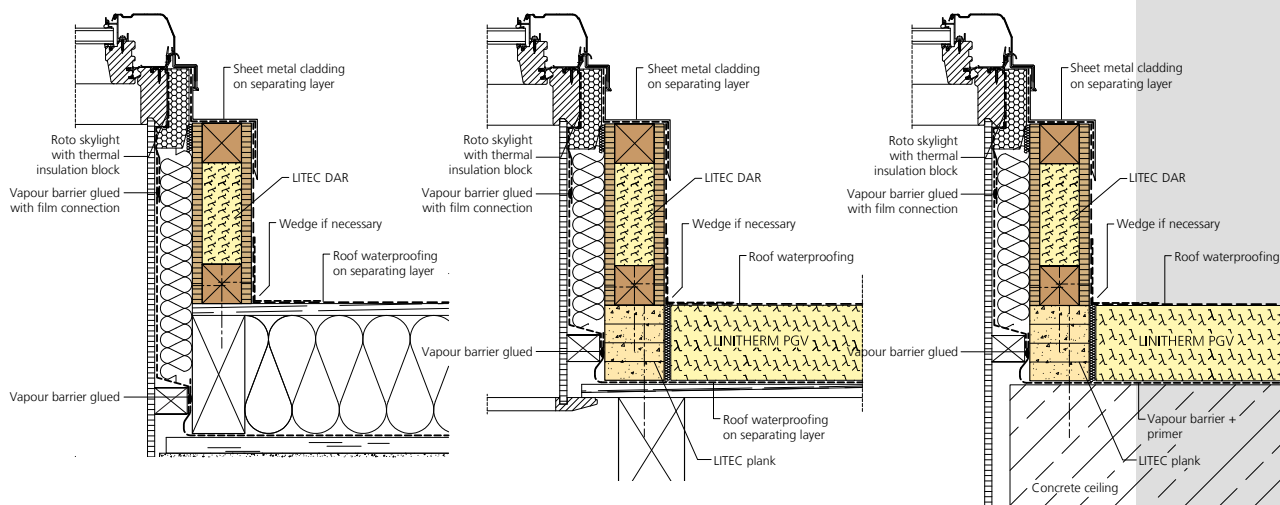
Slim construction – high insulation values

High level of prefabrication

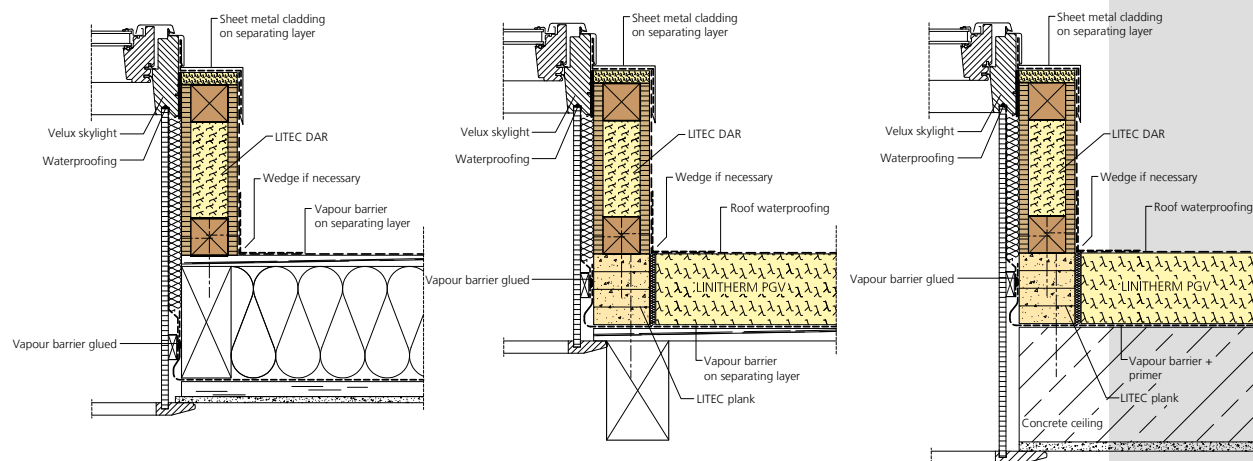
Individual window wedging

More daylight, more air

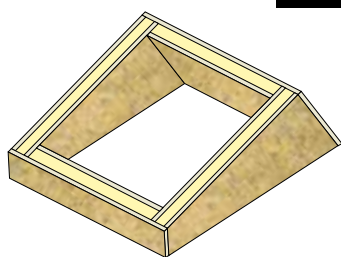
Roto roof window with thermal insulation block



Velux roof window



LITEC DAR Skylight wedge frames



Insulation core: Insulation core: 60 mm PUR/PIR rigid foam according to DIN EN 13165, building material class B2, application type PUR 029 DZ, WH Density approx. 33 kg/m³, clad on both sides with mineral fleece

Outer surfaces: interior and exterior plywood panels, 15 mm thick

Please note: individual parts pre-assembled in the factory including wooden construction elements

Linzmeier Bauelemente GmbH
 Industriestraße 21
 88499 Riedlingen, Germany
 T + 49 (0) 7371 1806-0
 F + 49 (0) 7371 1806-95

Königshofen
 Schortentalstraße 24
 07613 Heideiland
 b. Eisenberg/Th., Germany
 T + 49 (0) 36691 722-0
 F + 49 (0) 36691 722-20

The elements delivered as a construction kit are pre-assembled on-site or in the factory.

Assembly for roof insulation between rafters

The foot board is directly mounted on to the boarding. Place LITEC DAR on top. After securing the skylight the room-side vapour barrier is positioned and attached to the window.

Assembly for roof insulation above rafters

The vapour barrier is attached overhanging on the inside, then the distance element (e.g. LITEC board) in the thickness of the on-rafter insulation is screwed on to the rafters. The foot board is attached and LITEC DAR placed on top. Attach the vapour barrier to the window and stick onto the overlap. Additional PUR/PIR rigid foam insulation strips are attached to the outside/upper side of the skylight wedge frame, a seal is attached and connected to the roof seal of the main roof.

Info@Litec.de
 www.Litec.de